

TECHNICAL DATA SHEET

QH FLUIDCONTROL™ 200

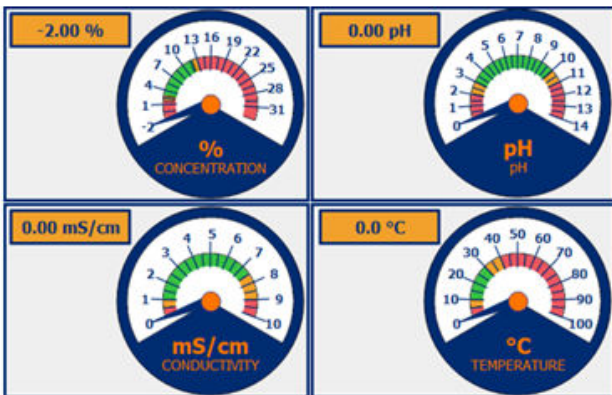
FLUID MONITOR AND CONTROL SYSTEM

QH FLUIDCONTROL™ 200 is completely self-contained and represents a new metalworking fluid property measurement and control standard. This Quaker Houghton engineered system:

- Measures fluid pH, conductivity, and concentration via refractive index and temperature
- Has recordable and downloadable measurements to enable metalworking fluid analysis, preventative maintenance, and performance optimization
- Provides automatic concentration and level control capability via its FLUID TOPUP module that can add fluid at high and low concentrations.

Applications

QH FLUIDCONTROL™ 200 can monitor and control water-miscible metalworking fluids, including metal removal fluids, aqueous quenchants, water glycol hydraulic fluids, and water based offshore fluids. It is also recommended for use to support field trials.



Health, Safety and Handling

Please consult the Safety Data Sheet (SDS) for information on storage, safe handling and disposal. The conditions or methods of handling, storage, use and disposal of the product are beyond our reasonable control - we assume no liability for any ineffectiveness of the product or any injury or damage, arising out of or in connection with these conditions.

The Benefits

- Metalworking fluid quality control
- Reduced metalworking fluid cost
- Reduced manpower for lab testing and concentration control.
- Fewer sump side additives.
- Reduced maintenance cost.
- Minimized waste treatment

Features and Specifications

PROPERTY	VALUE
Power	100 - 240 VAC; 50 - 60 Hz. Feed at 13A maximum
Measures	Up to 4 inputs: pH, Conductivity, Refractive Index, Temperature
Displays	7" Touch screen programmable and password protected 4 inputs continuous: pH, Conductivity, Concentration, Temperature, Graphing each up to 90 days
Range	pH: 0 - 14 Conductivity: 0-10 000 µS/cm
Control	Concentration: 0 - 20% Level: Up to 3.8 meters sump depth
Output	Connects to QH FLUIDTREND™ via cellular connection
Cabinet	760 x 760 x 300 mm, 30"x 30"x 12" Lockable Weight: 80 kg, 177 pounds (without options)
Availability	13 weeks

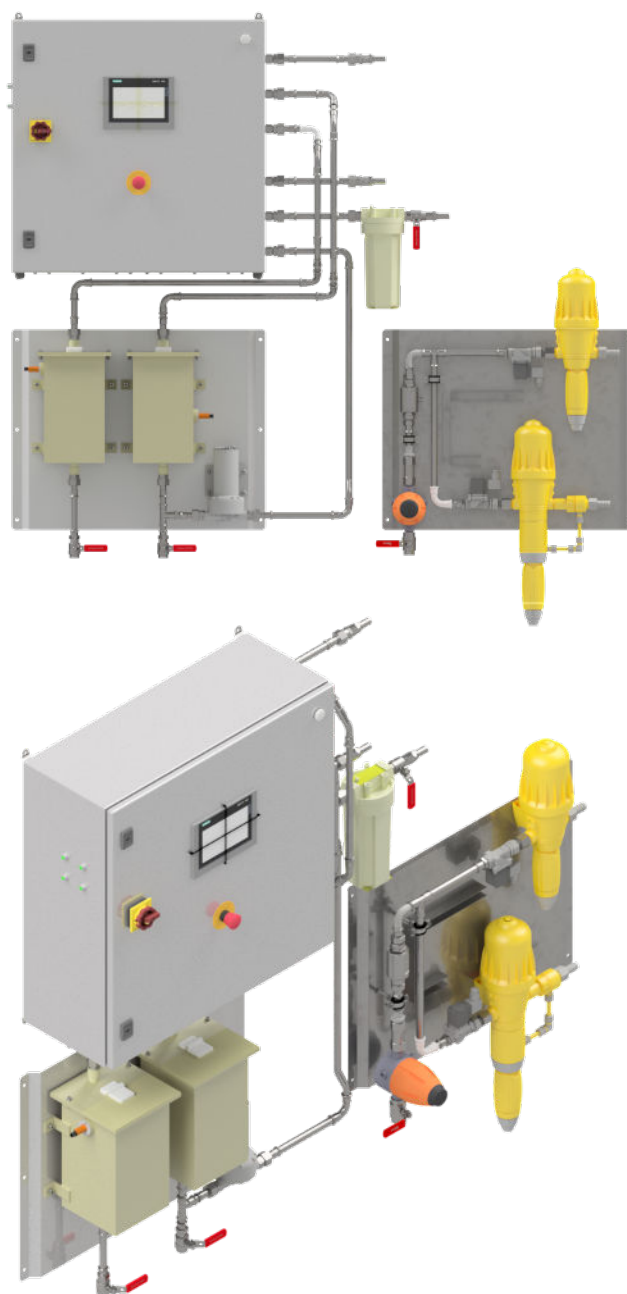


QH FLUIDCONTROL™ 200

FLUID MONITOR AND CONTROL SYSTEM

Set Up

1. Supply power to unit (100-240 VAC, 50-60 Hz, 1 PH).
2. Connect fluid feed from a pressurized source for analysis
 - Pressure = [2 - 5,5 bars] / [29 - 80 psi]
 - Fluid feed filter 20 µm / 0,8 mils
3. Feed pipe connection and return fluid via ½" pipe connection to the source (¾" pipe for TOPUP).
4. Towns Water feed is connected via ½" pipe
 - Pressure = [2 - 5,5 bars] / [29 - 80 psi]
5. Identify what fluid concentrations and working levels you want.
6. Program your desired set points and tolerances using the built in touch screen display.
7. Your system is set-up and ready to go!



All reasonable care has been taken to ensure this publication is accurate upon issue. Such information may be affected by changes subsequent to issue. This Technical Data Sheet is to be used solely for this product. Prior to any use, consult the Safety Data Sheet (SDS) for information on hazard risks and product use parameters. All liability and all warranties express or implied are hereby excluded as to product performance results, the accuracy of these data including any warranty of merchantability or fitness for any purpose.

